

WIRE ROPE SHEAVE (BEARINGS)

316 STAINLESS STEEL



Import



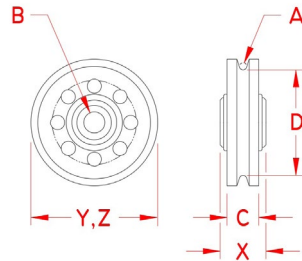
Precision
Cast



Suncor
Exclusive



Suncor
Patent



ITEM	A (wire size)	B (bore)	C (rim width)	D	X (height)	Y (length)	Z (width)	WLL (lb)	WT (lb)	PACKAGING TYPE	EACH (qty)	INNER (qty)	CARTON (qty)	UPC
S0413-0307	3/32" + 1/8"	3/8"	0.56"	1.88"	0.81"	2.25"	2.25"	1,000	0.36	POLYBAG	1	1	78	791506044505
S0413-0513	3/16"	1/2"	0.72"	2.75"	0.94"	3.25"	3.25"	1,200	0.82	POLYBAG	1	1	39	791506044512
S0413-0713	1/4"	1/2"	0.94"	3.50"	1.07"	4.25"	4.25"	1,200	1.50	POLYBAG	1	1	20	791506044529
S0413-0716	1/4"	5/8"	0.94"	3.50"	1.07"	4.25"	4.25"	2,500	1.46	POLYBAG	1	1	20	791506044536
S0413-0816	5/16"	3/4"	1.13"	4.38"	1.41"	5.25"	5.25"	3,800	2.63	POLYBAG	1	1	10	791506044543
S0413-1020	3/8"	3/4"	1.38"	5.25"	1.70"	6.25"	6.25"	3,800	5.20	POLYBAG	1	1	5	791506044550

NOTE: FOR WIRE ROPE; FITTED WITH TWO HIGH QUALITY, SHIELDED, STAINLESS STEEL BEARINGS.

*** HUB OF STAINLESS SHEAVE IS APPROXIMATELY 1/8" NARROWER THAN HUB WIDTH OF BEARING GIVEN.**

ALL DIMENSIONS ARE NOMINAL (+/- 3%) AND ARE SUBJECT TO CHANGE WITHOUT NOTICE.